




BUILDING  
OUR  
LEGACY

A Capital Campaign for St. Elizabeth Catholic Parish



TOGETHER, OUR  
PARISH COMPRISES  
MORE THAN NINE  
HUNDRED FAMILIES –  
EACH OF YOU FILLING  
THESE WALLS WITH  
LOVE, PASSION AND  
GOD'S WORK.



Dear Parishioners,

This is our time. This is our opportunity to continue the legacy that began 100 years ago. This is our chance to shape the future and to answer the call for St. Elizabeth.

When you look back at the history of our great parish, it's important to remember the sacrifices made by a small group of Catholics in the Waldo neighborhood a century ago to establish the humble beginnings of our church at 75th and Main. It's important to remember the vision our parish leaders had when sculpting the campus that spans several blocks and bolsters our thriving community. And it's important to remember the passion that has been passed along through generations to keep our parish moving forward, serving our community, educating our children, and inspiring faith and Christ's love in each and every one of us.

While it is imperative for us to look to our history to inspire us, remembering what has come before us is only part of the equation. We must build on this rich history and continue to move our parish forward.

Together, our parish comprises more than 900 families - each of you filling these walls with love, passion and God's work. We have gathered together in faith. Together, we have formed a Christ-centered community, and we have thrived. Yet, I believe tomorrow is what matters most. The century ahead is what drives us.

I am in awe of the faithful stewards who have come before us, as well as the community of parishioners here today that are committed to this Church, this school and our future. I look forward to building our legacy, together.

Peace,  
Father Greg.



Dear Friends:

It is an exciting time at St. Elizabeth. Together we are “Building Our Legacy.” These three words define this capital campaign.

We are **BUILDING** St. Elizabeth. The capital campaign will renew our campus by:

- **Church Gathering Space and Renovations**

- Making the northwest entrance to the Church more accessible to all
- Expanding the vestibule and enclosing the choir loft. This will give us both a more secluded space during Mass and a welcoming, larger gathering space before and after Mass.

- **Early Childhood Center Construction**

- **Parish Ministry Center Relocation** - The existing Parish Ministry Center will be torn down and the existing ECC will be transformed into the new Parish Ministry Center.

This is **OUR** campaign. It will require different contributions from the 900 registered households at St. Elizabeth. We will need prayer. We will need time. We will need hard work. And, of course, we will need financial commitments. But we will do it together. It is the commitment of each and every parishioner that will determine the campaign’s success. And when we look back, we will be pleased to reflect on something that was accomplished with our prayers, our work and our sacrifice.

This is our **LEGACY**. This campaign will provide spaces for the next generation to worship, provide for the poor, care for the youngest children, and prepare for the sacraments. As a community we are thankful for the legacy that others left. It is now our opportunity to build our Legacy.

We are honored to serve as the co-chairs of this capital campaign, but we are a very small piece of a much larger puzzle. By making a gift to the capital campaign, we give thanks to God and to our predecessors, and we build our own legacy.

Sincerely,  
Campaign Co-Chairs

Eric & Lisa Anielak, Kerm & Ellen Fendler, Chris & Jessie Underwood,  
Bob & Janet Wholey

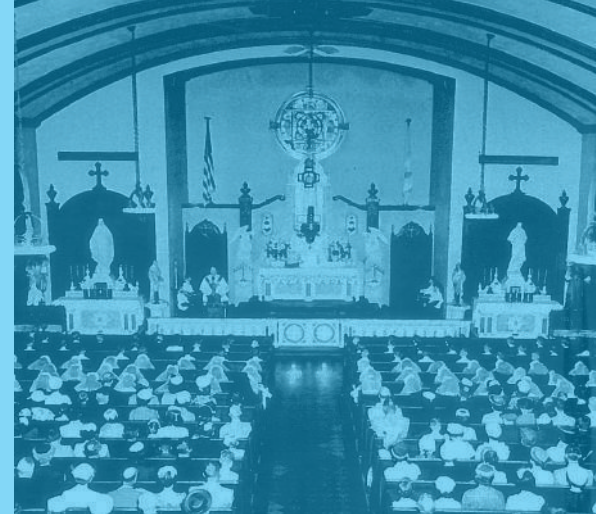
# The Vision for Our Legacy

For the past 100 years, St. Elizabeth Parish has thrived as a vital presence in the Waldo community. Throughout our history, the legacies of St. Elizabeth of Hungary and St. Elizabeth Ann Seton have inspired and shaped our ministries.

- We put prayer and celebration of the Sacraments at the center of who we are.
- We recognize the importance of Catholic education for children, youth and adults.
- We value our parish community, its diversity, inclusive spirit and unity.

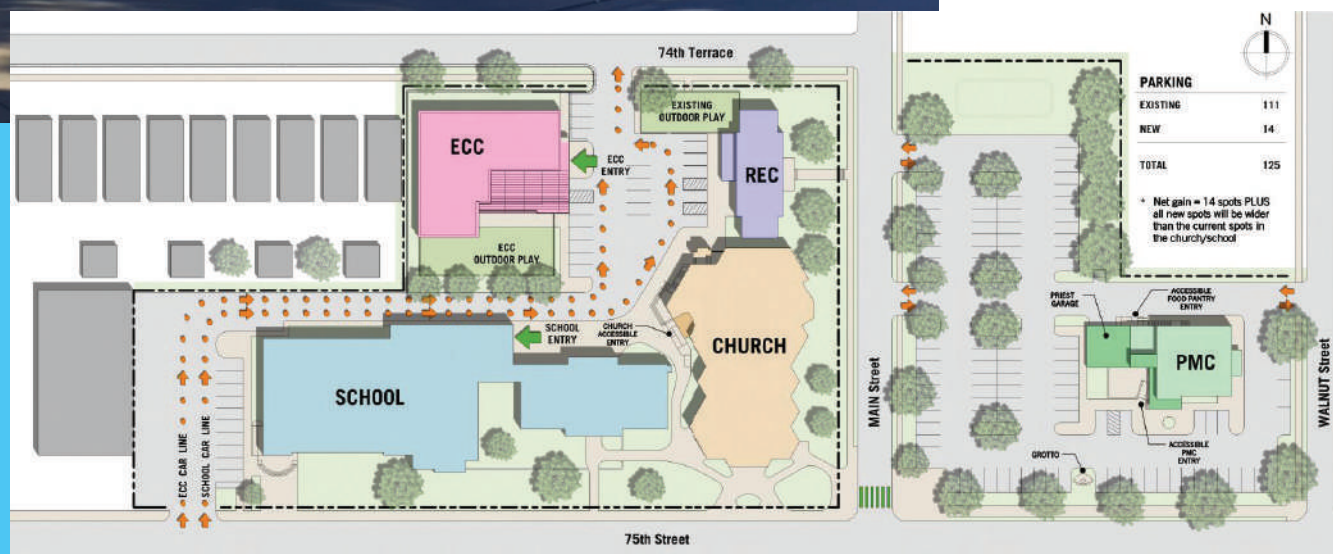
As our patron saints did, we want our faith to define who we are, how we live, and what we offer our community and the world around us. We have inherited a beautiful campus that has been faithfully maintained and has served us well. As stewards of St. Elizabeth, we strive to create a legacy that will remain strong and vibrant for generations to come.

Our Visioning Process and Facility Utilization Study, conducted prayerfully, professionally and intentionally, has brought us to a new horizon. Knowing that our church and campus serve our mission, we have the opportunity now to adapt and expand to meet current and future needs.





# Early Childhood Center



OUR LEGACY



## Early Childhood Center

We believe that a new early childhood center will continue to draw young Catholic families to our neighborhood and parish. By moving the new facility to the west side of campus, we will establish all school buildings on the west side of Main and make our campus safer and more functional for all students, parents, faculty and staff.

**Investment \$4 million**

### Highlights Include

- Improved safety and security by eliminating the need for our youngest students to cross Main street during the school day
- Eight new, bright classrooms designed specifically for needs of Early Childhood students
- First level multi-purpose space for lunchroom, indoor recess, and multi-class activities
- Second level outdoor space for additional learning and play for students, and event space for the STE community
- Cost efficiencies from new HVAC, lighting and other systems

## Church Renovations and Updates

Our church is central to the practice of our faith. We cherish the unique, mid-century character of the building and seek to enhance its beauty and functionality. There are critical issues such as accessibility this plan will address.

**Investment \$2 million**

### Highlights Include

- Improved accessibility to ALL members of our community by providing street-level access at all entrances, a larger 75th Street vestibule and an elevator to the lower level
- Eliminate the problem of sound carrying between church and 75th Street vestibule during Mass
- New interior paint
- Reconfigure sacristy areas to improve functionality and storage

## Meeting, Office and Parking Space

As our community has continued to grow, we have developed a need for additional meeting, office and ministry space and expanded parking for our parishioners and guests. The existing PMC building is failing structurally and no longer a viable part of our campus.

**Investment \$2 million**

### Highlights Include

- Multiple and flexible meeting spaces to allow more groups of varying sizes to gather
- Updated functional ministry space and storage
- Improved accessibility
- Ample and convenient parking for parish and community members
- Cost efficiencies from new HVAC, lighting and other systems

## The Financial Landscape

For generations, the people of St. Elizabeth have gathered together in faith. Together, we have formed a Christ-centered community. Together, we have thrived. In our first 100 years, we have served as a beacon of joy, hope, consolation and mercy within our great community, just as St. Elizabeth of Hungary and St. Elizabeth Ann Seton offered the world in their day. As we look to the century ahead, we recognize the call to deepen our commitment to our faith community and its ministries.

These new, expanded and updated facilities will breathe new life into our parish ministries and help serve our St. Elizabeth family and the Waldo community for years to come. We are building our legacy—a legacy that will continue to grow and prosper as we devote our gifts of time, talent and treasure to St. Elizabeth.

# Go Higher, Go Further

The *Building Our Legacy* Capital Campaign will set the stage for the next 100 years of worship and ministry at St. Elizabeth. In order for this effort to be successful, we must practice a guiding principle: **not equal gifts, but equal sacrifice**. Your personal gift is based on your personal circumstance, but when we each commit to give sacrificially, we demonstrate our gratitude to God for all his blessings, including our St. Elizabeth community.

## To start thinking about your gift, seek to do the following:

- A) Review the gift chart.
- B) Let your eyes rest on the largest gift you believe you can make.
- C) Now, consider a sacrificial gift. Consider going one level higher: from the more comfortable level to the more sacrificial level.
- D) Foregoing discretionary current or planned purchases, in support of our efforts to build our community, can help achieve that higher-level giving.
- E) Take time to pray, “Lord, what do you want to do - through me—for my parish?”
- F) Let the Holy Spirit lead you to a place that is satisfying and sacrificial.

Monthly	Yearly	3-yr Pledge
\$13,889	\$166,667	\$500,000
\$11,111	\$133,333	\$400,000
\$8,333	\$100,000	\$300,000
\$6,944	\$83,333	\$250,000
\$5,556	\$66,667	\$200,000
\$4,167	\$50,000	\$150,000
\$2,778	\$33,333	\$100,000
\$2,083	\$25,000	\$75,000
\$1,389	\$16,667	\$50,000
\$1,111	\$13,333	\$40,000
\$833	\$10,000	\$30,000
\$556	\$6,667	\$20,000
\$417	\$5,000	\$15,000
\$278	\$3,333	\$10,000
\$208	\$2,500	\$7,500
\$139	\$1,667	\$5,000
\$111	\$1,333	\$4,000
\$83	\$1,000	\$3,000



# Frequently Asked Questions

## **Why is St. Elizabeth embarking upon this campaign now?**

St. Elizabeth Catholic Parish is 100 years old and its buildings are all 50 to 75 years old. After a comprehensive visioning process and a facility planning process, we discovered that we are in urgent need of updating our church and campus for the next 100 years of ministry.

## **What will we be asked to consider through the Building Our Legacy campaign?**

All of us will be asked to reflect prayerfully upon God's countless blessings, to join in the ongoing mission of St. Elizabeth, and to consider prayerfully a generous financial response to update our church and campus.

## **Can I consider a gift of stock or securities?**

Yes! All parishioners can make stock or security gifts. Also parishioners age 70 1/2 or older are able to direct their required minimum IRA distribution to the parish tax-free, allowing the parish to receive an even larger gift. Everyone wins!

## **Will we borrow any money for the projects?**

That will depend on the proceeds from the campaign over the years. If we are close to a certain goal, then we may wish to borrow money to complete a project. It also depends on timing of gift receipts and construction projects. It may be the case that we wish to take out a small construction loan to start a project. But our ultimate goal is to incur no long-term debt.

## **When can we start construction on the first project?**

According to diocesan policy, we can break ground on our first project when we have 70 percent of funds pledged and 50 percent of funds on hand for each project.

## **Are the images presented here the final design for the project?**

No, what you see here is the work that has been done to date. It visually represents concepts from Straub Construction, Hollis and Miller, and St. Elizabeth. Over the coming months the team will proceed with the design process.

## **Are we able to make matching gifts?**

Yes, by all means check with your employer. Many employers make matching gifts for educational projects such as the Early Childhood Center. A few make matching gifts for religious projects.

## **How does the look of the new ECC building tie into the rest of our campus?**

The stone first level will draw from our history with a look similar to our oldest buildings, the original 1928 school building and the rectory. To visually connect with the current church, the color of the stucco on the second level will be painted to match the limestone. Our newest building will represent the past, present, and future of our parish community.

## **What about other needs around the campus?**

The 2016 Facility Utilization Study identified additional needs beyond the scope of this campaign. The resulting long-term Master Plan includes other campus-wide projects that will be addressed in the future.

# A Historical Snapshot of Our Campus

As we look ahead to the future and the transformation of our campus, it is important to take a look back and recognize the hard work and many hands that have built our St. Elizabeth Church and School.

Churches – 1921 and 1961



## Churches

Our first church was a storefront at 75th and Wornall. Its construction started in 1921 and was completed in stages as funds were raised. Father Kennedy lived in it until a rectory was built in 1930. It also housed the school with two rooms on its north end. It was finally finished 14 years later and dedicated by Bishop Thomas Lillis in 1935. One of the towers had a bell that altar boys had to ring by pulling on a long rope.

In the late 1950s, with six masses held every Sunday, the church was getting too small with seating for only 500 parishioners. In 1960, our first church was razed and construction started on our present church.



It was completed and dedicated in 1961 by Archbishop John Cody.

Being built pre-Vatican II, the original sanctuary was arranged so mass was said with the presider's back to the congregation. After Vatican II, it was arranged so the priest faced the congregation. Many other enhancements have been made throughout the years as funding became available.

The lower level of our church was originally a large open area. In 1971, it was configured as an open classroom for Grades 1-3. In 2001, when the school addition was complete, this area was renovated and became Seton Hall.



The Stone School - 1928



## The Stone School

Established in 1922, the school quickly outgrew the two rooms within the church. In 1928, the first floor of the stone school was complete and occupied by students. A second floor was added in 1934, and the school and church were dedicated in 1935. The basement of the school served as the kitchen and dining hall, and the third floor had a basketball court although with a low ceiling. In 2001, the dining area was reconfigured to the library and the third floor housed air conditioning equipment.

School Addition – 2001

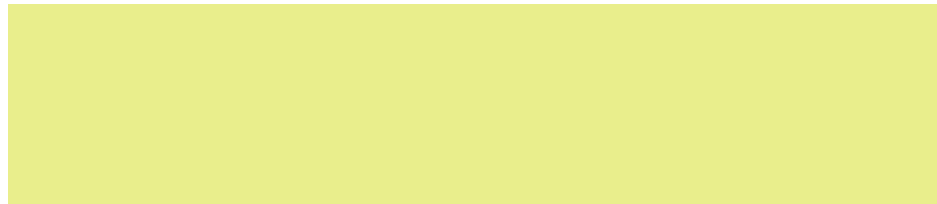


## School Addition

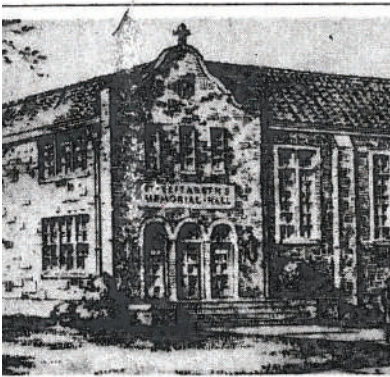
In 1999 recognizing more classroom space was needed, the "Miracle on 75th Street" capital campaign kicked off resulting in the 2001 completion of the addition between the stone school and Memorial Hall. This added several modern classrooms, labs and staff offices. It also allowed indoor passage from the church to Memorial Hall.

## Early Childhood Center

The first floor of this building was constructed in 1953 providing classrooms for several primary grades. To address our growing enrollment, a second floor was added in 1957. If you look closely you can see the slightly different shades of brick used between the floors. After the school addition was complete in 2001, it became our Early Childhood Center.



Memorial Hall - 1948



### Memorial Hall

After War World II, our growing parish recognized the need for a parish hall. Memorial Hall was built and dedicated in 1948 "to all parishioners who served in WWII especially those who gave their lives." The main floor was a small basketball court with stands for spectators. The third floor had meeting rooms and the basement was a recreation hall with a 6-lane bowling alley. In 1952, the recreation hall was torn out and St. Ann's Chapel installed. In 1960, when the old stone church was demolished and the new one was being built, the gym was converted to a worship space.

In 1986, the gym was updated and the basement renovated to include a kitchen, meeting areas and a large meeting hall called "Heritage Hall." After Seton Hall was completed in 2001, Heritage Hall was remodeled to serve as the school cafeteria.

Parish Ministry Center (PMC) - 1957



### Parish Ministry Center

The Parish Ministry Center did not always house the parish offices. It was built and dedicated in 1957 as a convent for the nuns teaching at our school. It had about 10 individual rooms, or "cells," just big enough for a twin bed, small desk, sink and small closet. These rooms are now storage areas. There was a small chapel, which is now the conference room, a kitchen and dining room.

As more lay teachers came and fewer nuns taught, the vacated convent was rented to the Capuchin Province as their regional headquarters in 1977 and housed a few seminarians. In 1984, the Capuchins moved. The first floor became the Parish Ministry Center, and the second floor became rented office space and the food pantry.

Rectories - 1930 and 1948



### Rectories

Our current stone rectory was not the only one ever on our grounds. Father Kennedy, our second pastor, actually lived in the original stone church (unfinished at the time) in the early years until in 1930 a small house was built for him. This wood frame house was just to the west of the stone school where the addition is now. The driveway apron on 75th Street is still there. Once the stone rectory was completed, the manager of Memorial Hall lived there.

Construction of the current stone rectory began in 1945. Due to low availability of materials during World War II, it was finally completed and dedicated in 1948. It housed the pastor and associate pastors and any guests they had. Several upgrades have been made over the years making it a comfortable living space.



## Have You Considered a Bequest Gift?

### **St. Elizabeth Carries on the Mission of Jesus Christ**

For 100 years St. Elizabeth has continued the mission of Jesus Christ by gathering the family of God's children, celebrating the Eucharist and Sacraments, sharing the Good News of the Gospel and serving the poor and needy. In this *Building Our Legacy* Campaign we will begin to implement our long-term plan of preparing our church and campus for the next 100 years.

This is a huge undertaking that will require participation and sacrifice by our entire community. All parishioners will be asked to prayerfully consider a:

- Three-year pledge today and
- An estate gift in the future

### **Building Our Legacy, A Part of the St. Elizabeth Long-term Plan**

You are being asked to make a three-year pledge, but we hope you will also think about the future needs of the parish. That is the beauty of a pledge and an estate gift; you can make a gift now and in the future that will build YOUR legacy.

### **How to Think of a Bequest Gift**

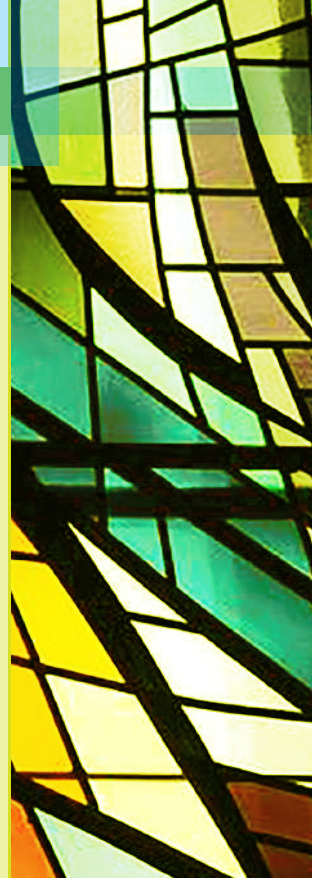
Along with our own families, the St. Elizabeth parish family is of great importance to all of us. It is God's family in Waldo, it is our spiritual family, and it is our second family. When you think of St. Elizabeth Parish as part of your family, it makes sense to want to leave a gift to help provide for the long-term benefit of this family after you are gone. Such gifts allow you to support the current needs of St. Elizabeth as well as your own future living needs.

### **Contact Heather Solis, Director of Development**

Have questions? Need more information? Please contact Heather Solis in the Parish Office at 816.523.2405 or check the box on your pledge card requesting information about making a bequest. Estate gifts may be given from a variety of sources including Life Insurance, Retirement Accounts, Stocks and Real Estate. Please contact your attorney and/or financial representative to determine the best source for you personally.

### **Legal Title**

Our legal name for future reference is: St. Elizabeth Catholic Church, Kansas City



2 East 75th Street, Kansas City, MO 64114 • (816) 523-2405 • [stekc.org](http://stekc.org)

